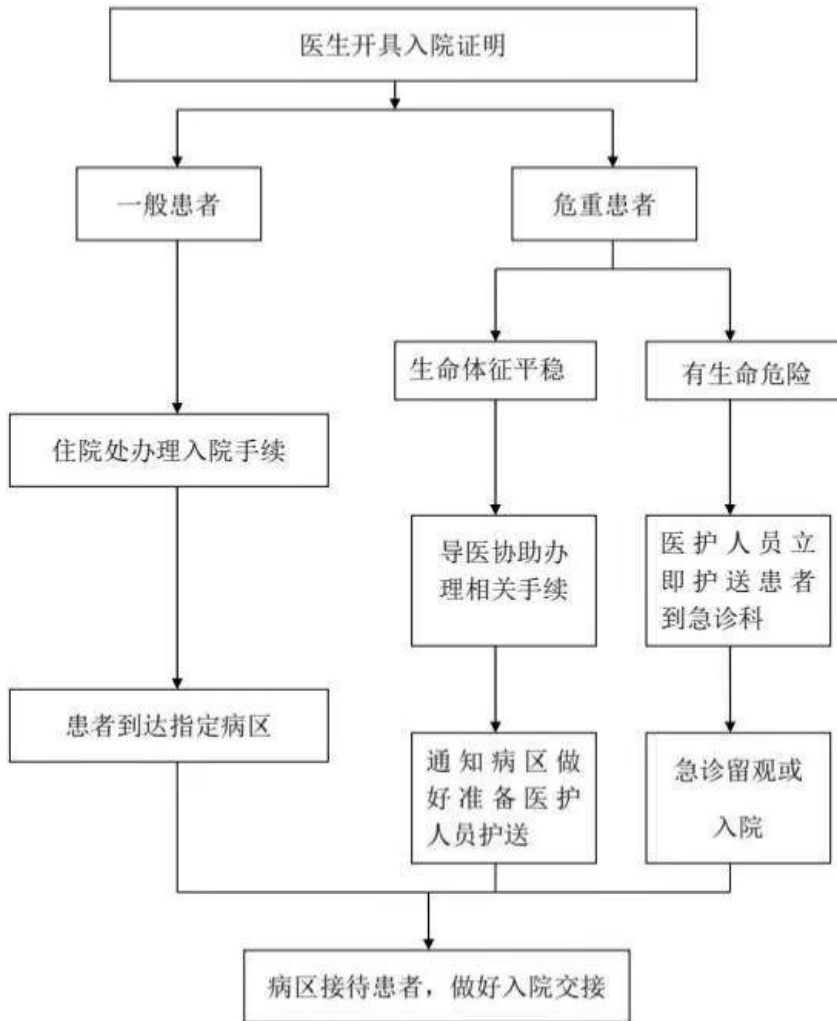
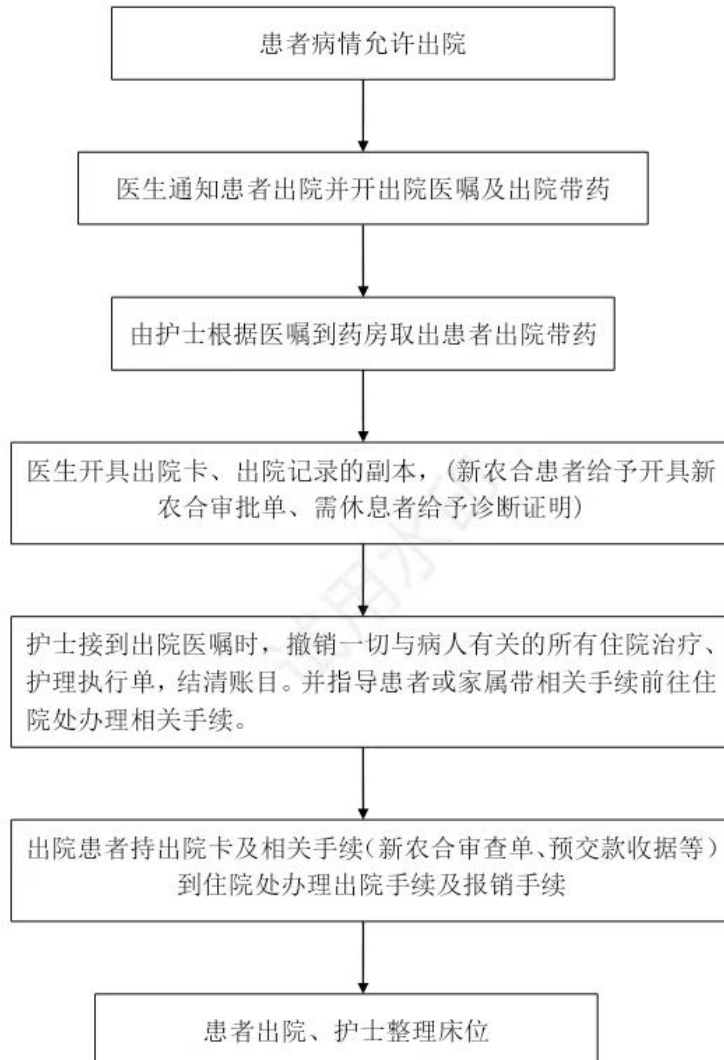


# 李千户镇卫生院临床医疗制度、流程

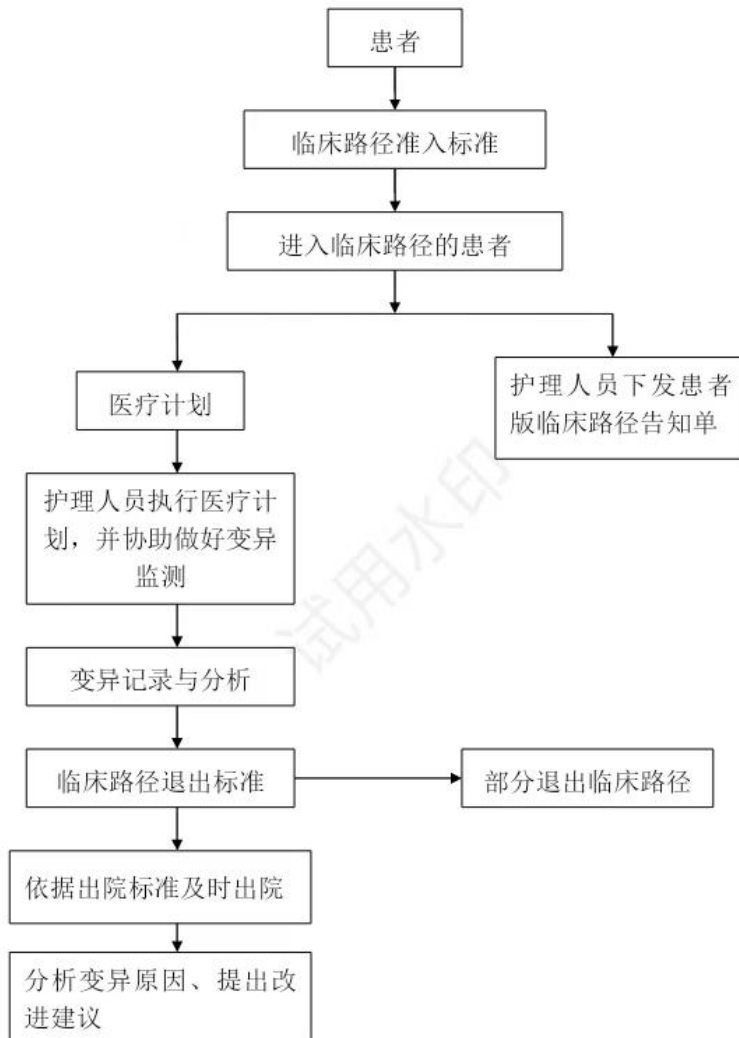
## 入院流程



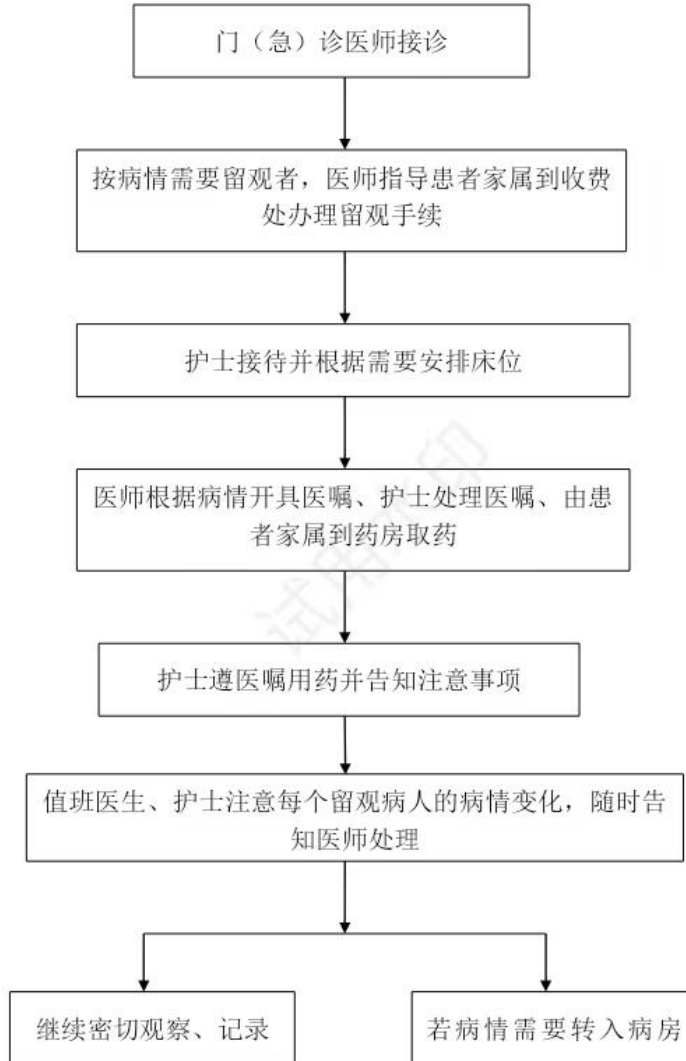
## 出院流程



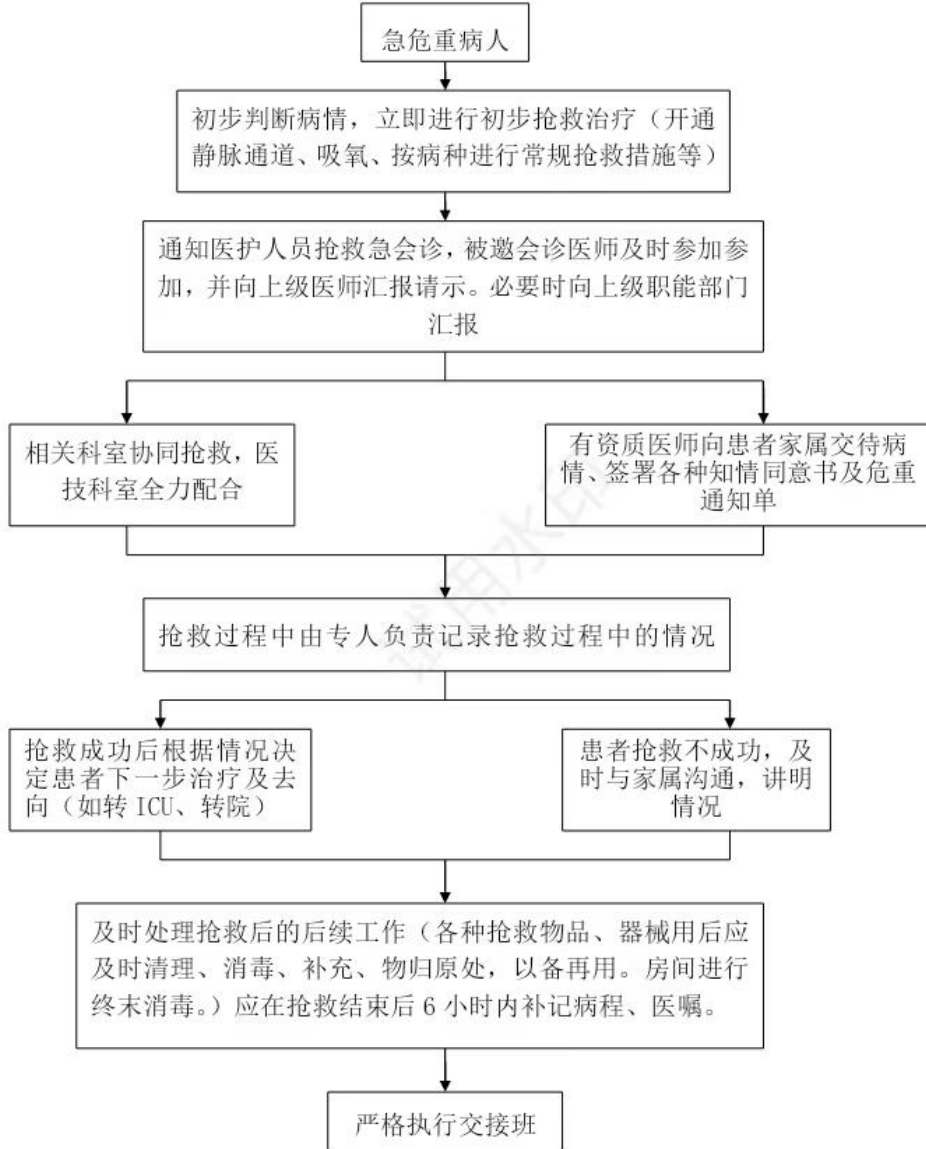
临床路径实施流程图



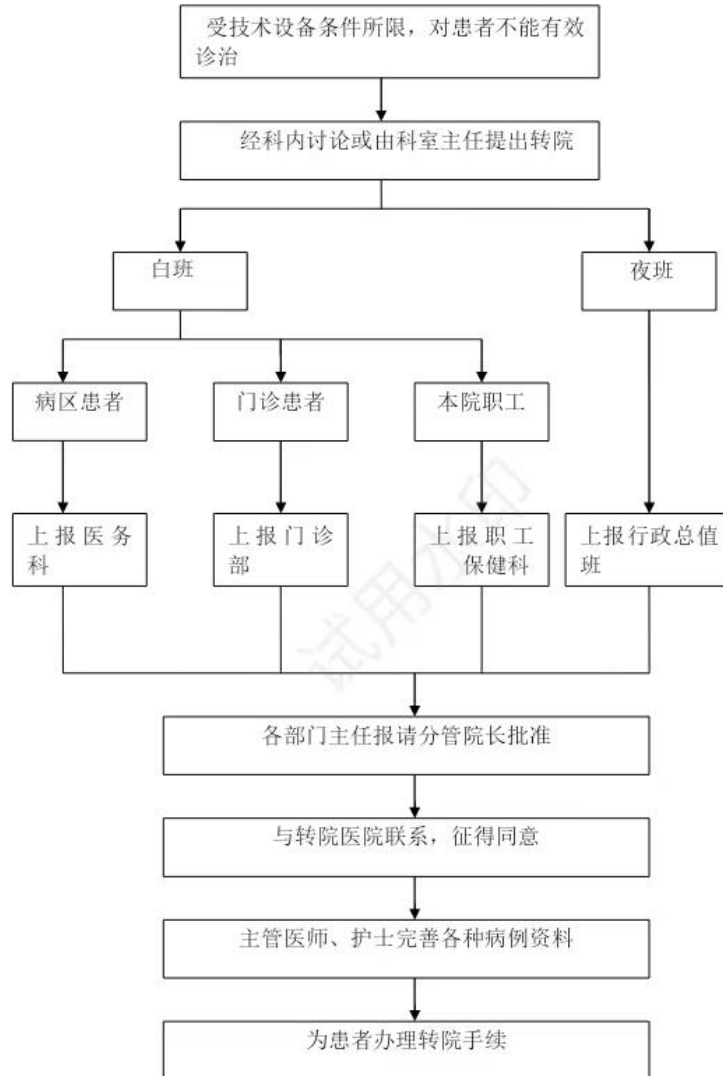
## 急诊留观流程



## 急危重病人抢救流程



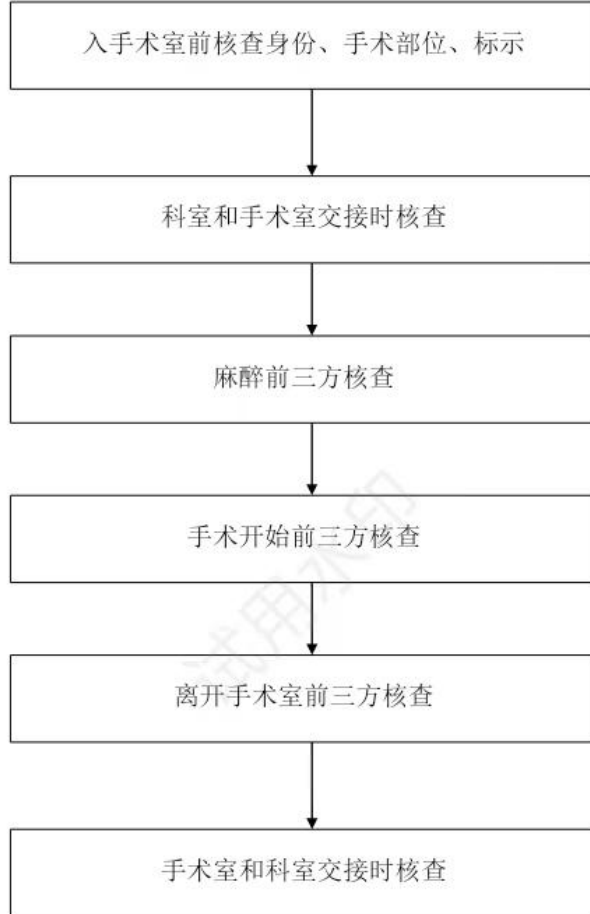
## 转院流程



## 院内会诊讨论流程

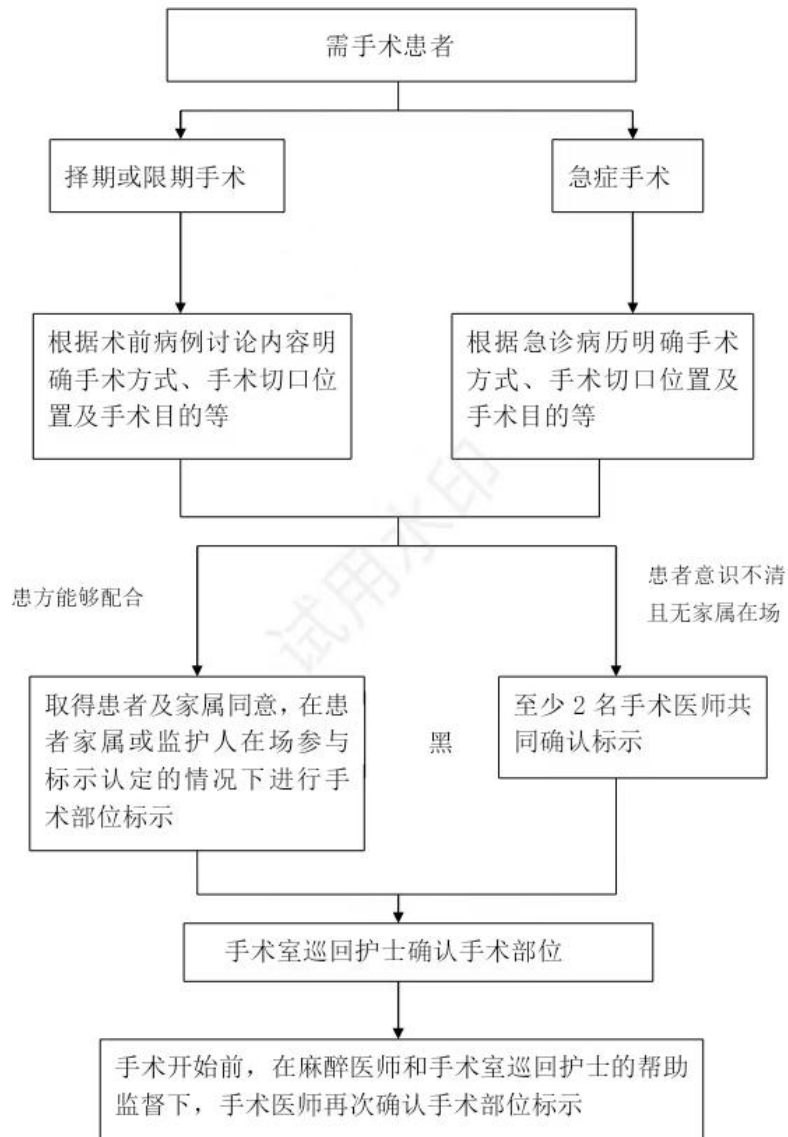


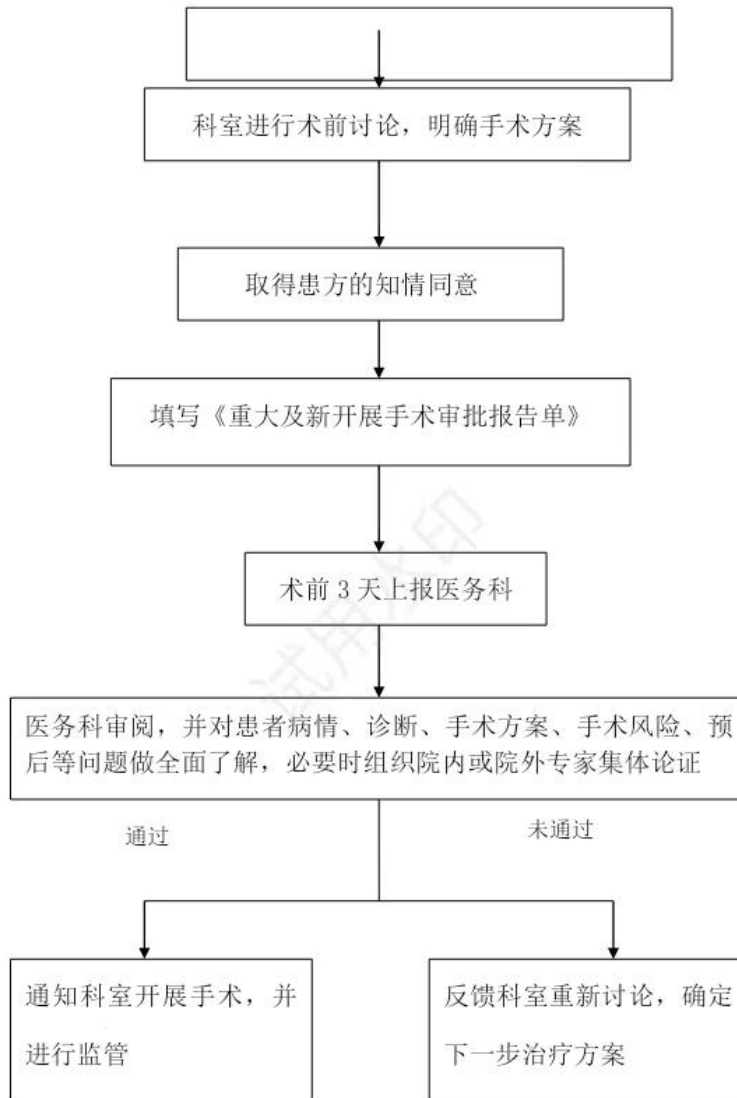
## 手术安全核查流程



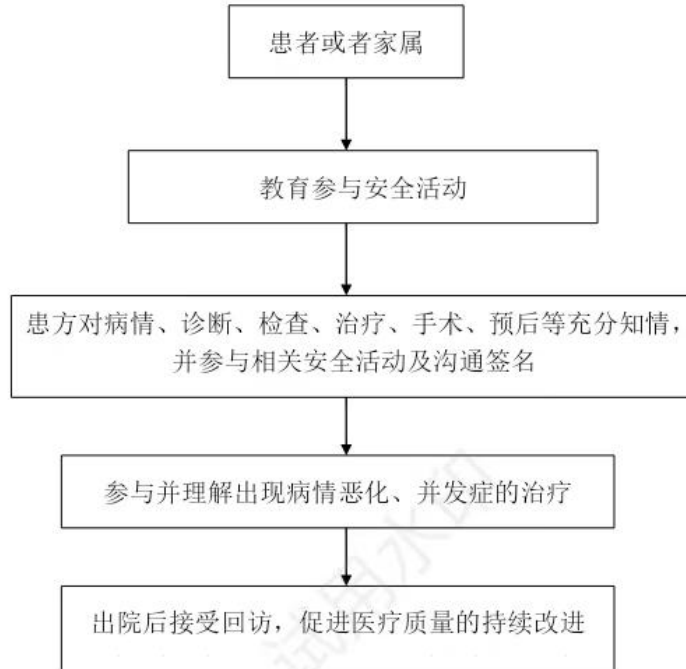


## 十、手术部位识别标示流程

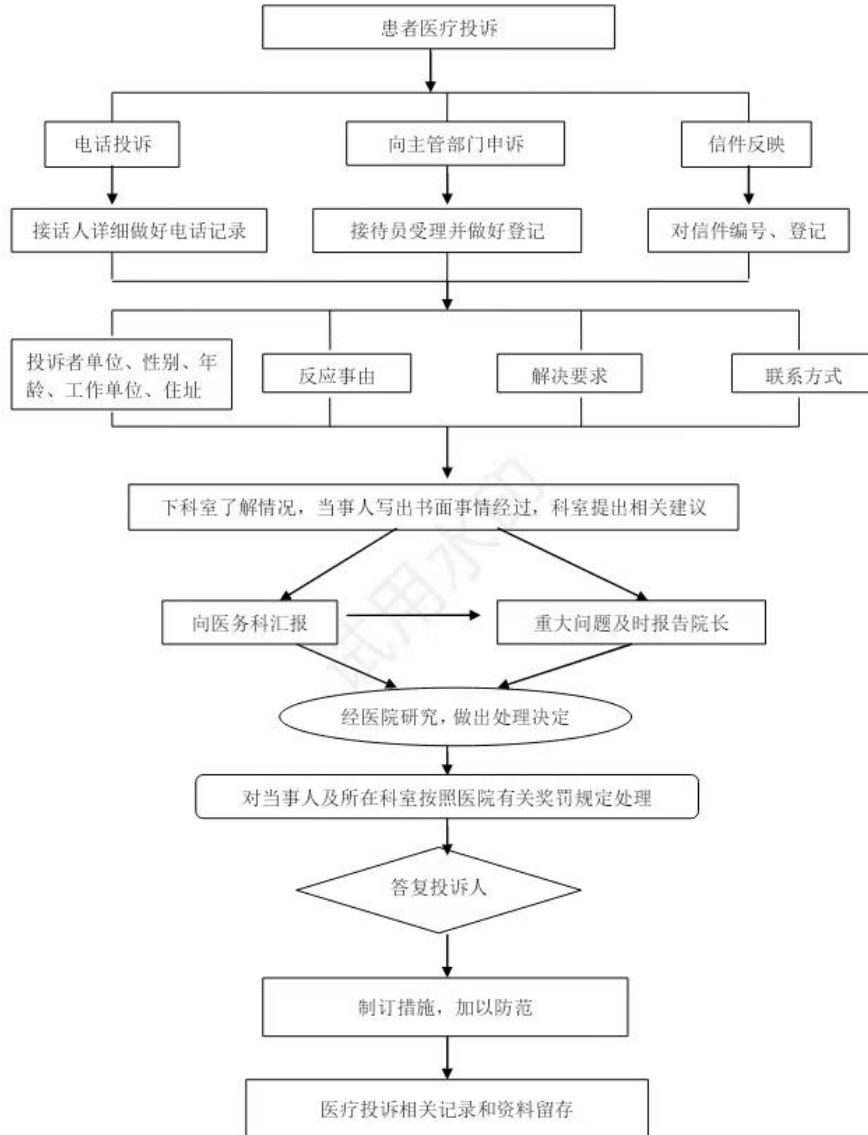




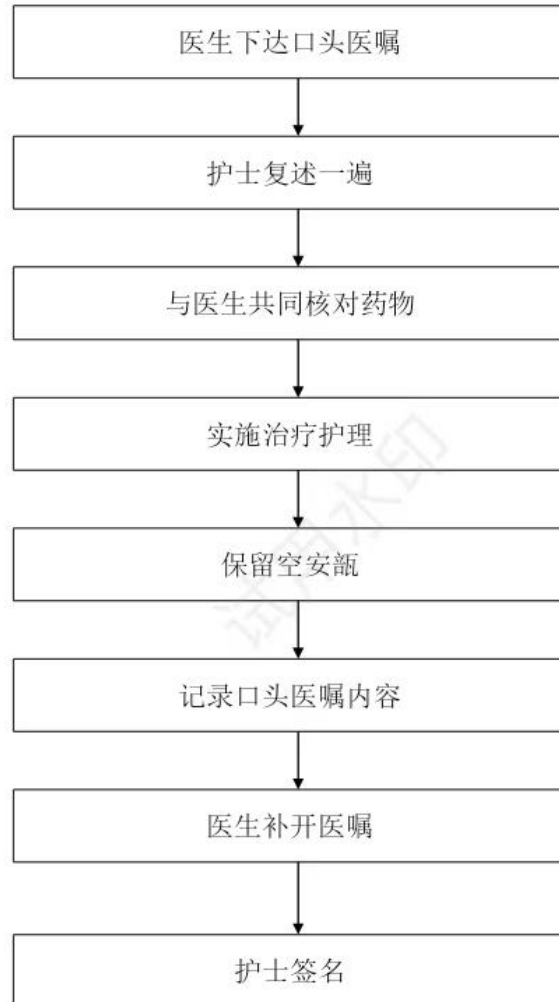
## 患者参与医疗安全流程



## 患者医疗投诉处理流程



### 紧急情况下口头医嘱执行流程



### 社区双向转诊流程



## 患者随访及复诊预约流程

